



Alta Vista

— AN ATLAS COMPANY —



STATEMENT OF QUALIFICATIONS WATER

2020



FIRM OVERVIEW



BY THE NUMBERS

#12

ENR Top 100

3,200+

professional staff nationwide

100+

offices

40

states

approx.

\$500

million in revenue

OUR PURPOSE

Keeping people safe, connected, and productive with infrastructure that lasts for generations.

WHO WE ARE

As a world-class organization dedicated to creating lasting infrastructure with more than 3,200 people in more than 100 offices, Alta Vista Solutions, an Atlas Company, is uniquely connected to the communities we serve. Our family of companies has over 80 years of collective experience, based on our core values of mastery, trust, compassion and respect. All while providing a safe and sustainable infrastructure for our team members and clients.

SERVICES

Our services have grown to include everything from engineering design, materials testing, construction quality assurance, inspection, and project and program management services. We see beyond the project and focus on what is most important—improving the lives of the people in the communities in which we live and work.



SERVICES

WHAT VALUE CAN WE OFFER YOU?



ENGINEERING & DESIGN - Civil engineering, transportation planning, structural engineering, traffic engineering, railroad crossing design and safety reviews.



PROGRAM MANAGEMENT - Uniquely diverse services, ranging from public construction in the transportation and water/wastewater industries, to providing private sector programming services for a wide range of buildings.



CONSTRUCTION SUPPORT - Construction quality assurance, construction engineering and inspection, material testing, project oversight and documentation, and comprehensive audit support.



MATERIALS ENGINEERING & TESTING - AASHTO-certified laboratories that test varying construction materials such as asphalt, concrete, and soils—all performed to meet rigorous industry requirements. Specialty inspections including structural steel, welding, shop fabrication, and many others.



CONSTRUCTION QUALITY ASSURANCE - Owner representation, quality plan review and development, special inspections and testing, non-destructive inspections, and construction materials engineering and testing.



FABRICATION INSPECTION - Global fabrication inspection with numerous CWI, NDT Level II, NDT Level III and NACE certified individuals, with a solutions-oriented mindset to ensure products meet all the owner expectations for quality and schedule.

SERVICES

ENGINEERING & DESIGN
PROGRAM MANAGEMENT
CONSTRUCTION SUPPORT
MATERIALS ENGINEERING & TESTING
CONSTRUCTION QUALITY ASSURANCE
FABRICATION INSPECTIONS

SERVICES | ENGINEERING & DESIGN



Years of experience in design and construction of a broad range of transportation and civil infrastructure projects gives Alta Vista unique expertise in the fields of engineering and planning.

Our years of success have been built on the principles of strong lines of communication, best in class planning and design professionals, meticulous quality control measures throughout all stages of a project's development and fluid participation and direct input of all team members.

This process of cross-knowledge sharing among team members and continuous improvement of operations is a proven strategy ensuring maximum value for the Owner and fewer unforeseen problems during construction.

Alta Vista believes firmly in thorough site investigations to best understand how the conditions of a site will interact with proposed construction.

We employ state of the art tools and methods to investigate subsurface conditions to identify and assess any risks posed by site conditions to the project. We offer full-service site assessment and wetlands delineation for clients ranging from small residential developers to large municipalities. We provide test borings for soil, rock and groundwater monitoring.

Our construction inspectors for roadway and building programs are qualified to inspect contractor work sites for permit compliance. In addition to our civil/site and transportation projects, our inspectors provide water quality monitoring and sampling for many landfill clients and are experienced with installing and maintaining automated data monitoring and collection devices.



SERVICES

➤ CIVIL ENGINEERING

- Surveying / Mapping
- Hydraulic Studies
- Stormwater
- Water / Wastewater
- Solid Waste / Landfill

➤ TRANSPORTATION ENGINEERING & PLANNING

- Transportation Planning
- Corridor Studies
- Highways & Freeways
- Streets & Roadways

➤ STRUCTURAL ENGINEERING

- Foundations
- Bridge Design
- Buildings

➤ LANDSCAPE ARCHITECTURE

- Parks
- Streetscapes
- Trails

➤ LAND ACQUISITION SERVICES

- Appraisal
- Right-of-way (ROW) Acquisition
- Utility Easement Acquisition
- Relocation Specialist

➤ GEOTECHNICAL SERVICES

- Subsurface investigations

➤ SITE ENGINEERING

- Site Characterization
- Geophysics

SERVICES | PROGRAM MANAGEMENT



Alta Vista provides public and private sector clients with comprehensive support in managing large-scale improvement programs. Alta Vista will help manage your program as efficiently as possible with results that are built to last. We believe in a strong work ethic of transparency and collaboration between all parties involved and are uniquely connected to the communities we serve.

Our program management experience covers broad segments of enterprise including hospitality, healthcare, education, industrial and municipal projects throughout the United States for public and private clients. With more than \$2 billion of in-place construction, we manage large and small-scale facility improvement programs and multi-year local option sales tax programs and also provide comprehensive program support to public and private sector clients. We are an extension of a government or institution during each stage of a capital improvement program.

Our program management services are uniquely diverse, ranging from public construction in the transportation and water/wastewater industries, where we work with various state and municipal entities in the planning, funding, designing and the construction process of public works programs and projects while also providing private sector programming services for a wide range of building types.



SERVICES

- Constructability Review
- Plan & Drawing Review
- Bid Evaluation & Award Analysis
- Contract Documents Preparation
- Contract Administration
- Project Management
- Project Cost / Schedule Control
- Alternatives / Value Engineering
- Facility / Asset Management
- Permit Preparation & Review
- Construction Observation & Monitoring
- Document Review & Control
- Progress Documentation & Payment Review
- Change Order Administration
- As-Built Record Drawings
- Auditing Project Records
- Warranty management
- Claims Avoidance, Review & Mitigation
- Dispute Resolution

SERVICES | CONSTRUCTION SUPPORT



Alta Vista offers a full suite of comprehensive construction support services for the most challenging large-scale sites and structures. Services cover construction management, construction engineering & inspection, material testing, project oversight & documentation, and comprehensive audit support.

We provide a hands-on approach to project management from inception to completion, ensuring construction sites, plans and designs strictly comply with approved construction documents and client expectations.



SERVICES

➤ CONSTRUCTION MANAGEMENT

- Constructibility Review
- Plan & Drawing Review
- Bid Evaluation & Award Analysis
- Contract Documents Preparation
- Contract Administration
- Project Management
- Project Cost / Schedule Control
- Alternatives / Value Engineering
- Permit Preparation & Review
- Construction Observation & Monitoring
- Document Review & Control
- Progress Documentation & Payment Review
- Change Order Administration
- As-Built Record Drawings
- Auditing Project Records
- Warranty management
- Claims Avoidance, Review & Mitigation
- Dispute Resolution

➤ PROJECT ESTIMATING & SCHEDULING

➤ SURVEYING

- Utility Coordination (UC)
- Subsurface Utility Engineering (SUE)

SERVICES | MATERIALS ENGINEERING & TESTING



Alta Vista's construction materials engineering and testing services give owners confidence that their investment is built in accordance with the project's approved plans and specifications. Our expanding in-house, AASHTO-certified laboratories offers a wide variety of testing services for varying construction materials such as asphalt, concrete, and soils.

Our staff includes a full complement of professional engineers, geologists, environmental specialists, laboratory managers and ACI, RTT and NICET-certified technicians who provide a broad suite of construction tests and inspections, all performed to meet rigorous industry requirements.

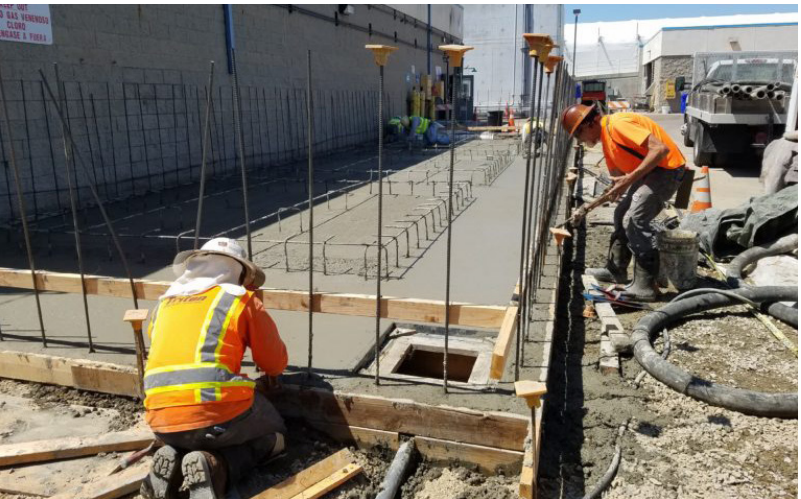
Alta Vista believes firmly in thorough site investigations to best understand how the conditions of a site will interact with proposed construction.

We employ state of the art tools and methods to investigate subsurface conditions to identify and assess any risks posed by site conditions to the project. We offer full-service site assessment and wetlands delineation for clients ranging from small residential developers to large municipalities. We provide test borings for soil, rock and groundwater monitoring.

Our construction inspectors for roadway and building programs are qualified to inspect contractor work sites for permit compliance. In addition to our civil/site and transportation projects, our inspectors provide water quality monitoring and sampling for many landfill clients and are experienced with installing and maintaining automated data monitoring and collection devices.

SERVICES

- Product Evaluations
- Factory QC Services
- Forensic & Structural Investigations
- Plan Review
- Metallurgical Laboratory
- Materials Testing & Inspection
 - Concrete
 - Soils & Aggregates
 - Asphalt
 - Epoxy Bolting / Doweling
 - Masonry
 - Structural Steel
 - Fireproofing / Spray-applied FRM
 - Non-Destructive Testing & Evaluations
- Site Engineering
- Site Characterization
- Geophysics
- Geologic Mapping
- Geologic Hazard Evaluations
- Laboratory Services
- Hydrogeology



SERVICES | CONSTRUCTION QUALITY ASSURANCE



Alta Vista offers a full suite of quality assurance and quality control services for construction projects of all sizes. We have the technical expertise to observe, inspect and test construction material for compliance with approved construction documents and client expectations. Our certified independent laboratories are designed to test in-house or we offer onsite testing. Testing includes ASTM and other relevant standards.

SERVICES

- Owner Representation Services
- Quality Plan Development
- Construction Engineering & Inspection
 - Source & Field Inspections
 - Concrete
 - Steel
 - Welding
 - Soils & Aggregate
 - Coatings & Paint
- Non-Destructive Inspections
- Construction Materials Engineering & Testing



SERVICES | FABRICATION INSPECTION



Alta Vista offers comprehensive fabrication inspection services for water projects. Whether it is for pipelines or mechanical or electrical components, a thorough fabrication inspection mitigates schedule and cost risks to the project by avoiding unforeseen delays out in the field. A good fabrication inspection requires an understanding of the quality system of the supplier, understanding of specific areas of their weaknesses, and focused quality assurance inspection for the welding, coating, etc. A seasoned quality assurance inspector establishes the expectations with the supplier up front ensuring supplier gives necessary attention to the project and performs comprehensive quality assurance minimizing rejects and repairs, resulting in superior quality product. The broad knowledge of our quality assurance inspectors ensure they are able to perform detailed welding, NDT or coating inspections or assess the acceptability of factory acceptance test to ensure all components operate as expected. Having performed fabrication inspections at over 250 facilities worldwide, our inspection team is prepared to handle any component and any fabricator at any location.



SERVICES

- Fabrication shop quality reviews
- Quality control plan review
- Fabrication shop audits
- AWS CWI Inspections
- ASNT Level II inspections for PT, UT, PAUT, RT & MT
- ASNT Level III inspection and NDT procedure development
- Welding Engineering (PE with strong fabrication background)
- NACE Level I, II & III inspections
- Torque verifications
- Mechanical and electrical component assembly inspection
- Factory acceptance test review



MARKETS

COMMERCIAL

EDUCATION

GOVERNMENT

HEALTHCARE

INDUSTRIAL

STATE/LOCAL AGENCY

TRANSPORTATION

UTILITIES

WATER

ELLIS CREEK WATER RECYCLING FACILITY

PETALUMA, CA



This \$115M Ellis Creek water recycling facility in Petaluma, California, replaced Petaluma's Hopper Street wastewater treatment plant, which was built in 1937. The original treatment plant was below standards for discharging water into the Petaluma River. The new plant operates 24 hours a day, seven days a week, combining natural wetland treatment processes and state-of-the-art technology to provide recycled water to the city. It increases the capacity of average dry weather flow from 5.2 million gallons per day to 6.7 million gallons per day and produces Title 22 recycled water.

The facility also produces about 2,200 million gallons of disinfected recycled water annually, which is used for irrigating vineyards, parks, schools, and utility water at the plant and 700 acres of agricultural land.

The project includes multiple structures, miles of pipes and electrical duct banks, and over 60 acres of wetlands with a trail system for the community. Construction of the project started in October 2005 and was completed in 2009.

Alta Vista provided a full range of materials testing and special inspection services on this \$115 million wastewater treatment plant project. The Alta Vista team performed geotechnical observation and soils testing during the mass grading operations of a completely new water treatment facility inclusive of administration and operations buildings, tanks, and retention ponds. During construction, we performed rebar and concrete testing along with masonry inspection and testing. We also covered structural steel fabrication in Mexico and the erection welding inspection at the site.



ALTAMONT WATER TREATMENT PLANT AND PIPELINE

LIVERMORE, CA



The Altamont Pipeline project consists of approximately 12 miles of 42-inch to 48-inch diameter transmission pipeline that will connect the Altamont Water Treatment Plant to the Zone 7 distribution system.

Alta Vista provided materials testing and special inspection services for soil compaction testing, asphaltic compaction testing and pipe welding and ultrasonic testing. Alta Vista also performed Quality Assurance overview for pipe fabrication at Ameron located in Tracy, California and Jibco located at Meyer Island, California.



INTERCEPTOR SEWER (REACHES 11B-15) AND AGUA HEDIONDA SEWER LIFT STATION

CARLSBAD/VISTA, CA



The \$64.2 million project consisted of construction of a new 33 gallon per day sewage lift station to replace the existing station, which was the City of Carlsbad's largest lift station. The new structure houses eight pumps, an emergency generator, bypass motors, an electrical control building, and odor control facilities. This increases the station's capacity by 50 percent to meet future demand. The project featured the construction of a new 30-inch parallel force main, which provides 4,000 linear feet of HDPE pipe parallel to an existing line, and 7,000 linear feet of 54-inch gravity sewer line. These pipes provide increased capacity and reliability to the sewer system. The new gravity sewer was constructed within the right-of-way of Avenue Encinas and a portion of the new sewer required installation by microtunneling. The new force main construction utilized a combination of standard construction methods and Horizontal Directional Drilling to avoid existing utilities. Other features included two miles of sewer pipeline and an 11,000-foot recycled water line. The project also included the replacement of an existing wood trestle bridge over the Agua Hedionda Lagoon with a new 140-foot long steel truss bridge to provide access to sewer facilities and support the new pipelines. The bridge is wide enough to accommodate maintenance vehicles and a future segment of the Coastal Rail Trail. After the project was complete, new pavement overlay was provided on Avenida Encinas as well as new restriping to incorporate bicycle lanes.



Alta Vista staff provided geotechnical services including observation and testing of grading, utility trench backfill, wall backfill, subgrade, asphalt concrete, and aggregate base material. We also provided special inspection and materials testing services including inspection and testing of cast-in-place concrete, field structural steel welding, and high-strength bolting inspection and testing; concrete quality control services.

SAN VICENTE PUMP STATION AND PIPE-LINES

SAN DIEGO, CA



The \$838 million project is a part of the San Diego County Water Authority's \$1.5 billion Emergency Storage Project. Working together, these facilities keep water flowing through the San Diego area in the event of an emergency, and move 300 million gallons of water per day from the San Vicente Reservoir through the 11-mile-long San Vicente Pipeline to the Authority's water delivery system. The pump station pumps water to the surge control facility, consisting of a 3 million-gallon, 217 foot diameter surge tank, protecting the San Vicente Pipelines and other pipelines from extreme pressure fluctuations in the event of a pump or valve failure. Water then flows through the San Vicente Pipeline west to the Authority's Second Aqueduct. The project also included construction of the portal for the tunnel housing the 11 mile, 102-inch diameter San Vicente Pipeline. The tunnel was built at depths ranging from 50 to 550 feet underground, to lessen impact to the land and surrounding communities. Additional work included a Reservoir Interconnect pipeline including 1,410 feet of 90 inch pipe and fittings, connecting to a future outlet associated with the San Vicente Dam; 260 feet of 66-inch and 90 feet of 48-inch pipe and fittings connecting to the City of San Diego San Vicente Pipelines 1 and 2; and the San Vicente Interconnect Pipeline, consisting of 2,500 feet of 60-inch pipe and fittings, pipeline appurtenances and concrete encasement of 750 feet of 60-inch pipe. One of the

challenges discovered was that excavation in the very hard rock underlying portions of the project area resulted in fill material containing significant quantities of large rock. Special fill placement and compaction procedures were developed in conjunction with the Construction Manager to ensure proper construction of new fills.

Alta Vista staff provided geotechnical services of observation and testing of grading, subgrade, aggregate base material, asphalt concrete, wall backfill, and utility trench backfill as well as special inspection and materials testing services which included inspection and testing of cast-in-place and reinforced concrete, batch plant, masonry, high-strength bolting, and field structural steel welding; concrete quality control; non-destructive testing services.

DWR SWP PARTNERSHIP

SACRAMENTO, CA



In support of the California Department of Water Resources, State Water Project (SWP), Alta Vista provides project management, process improvement, and facilitation services as part of the SWP One Team initiative.

DWR SWP had previously identified 4 key areas as opportunities for improvement within the organization – Shared Mission One Team, Communication and Collaboration, Embracing and Managing Change, and Internal and External Partnership. Additionally, SWP committed to pursuing an assessment against Malcolm Baldrige Performance Excellence criteria as part of the initiative.

Alta Vista is in the process of facilitating meetings with senior DWR SWP leadership and staff in order to approach these objectives using a structured problem solving method. This method will help to define objectives for the goal areas, assess the current ability of SWP processes and procedures to satisfy those objectives, identify opportunities for improvement through root cause analysis, develop and refine solutions, and finally implement and monitor improvements.

In the define phase, SWP leadership was asked to further define each of the goal areas previously identified for improvement. The data was collated, and the team was asked to vote on the desired outcomes for each goal. The completion of these activities concludes the first phase of the project and begins the measurement phase, which entails gathering information about the ability current processes in place to meet those desired outcomes.

Simultaneously, Alta Vista is supporting the Baldrige Assessment by facilitating data collection and analysis activities, such as documentation and analysis of cross-functional workflows, facilitation of interviews, and drafting/review of the assessment report. Following efforts to define the current state, Alta Vista will facilitate root cause analysis to identify potential solutions. Identified solutions would then be developed and tested, to include pilot runs of specific improvements. Finally, solutions can be incorporated into the organization and monitored for their effectiveness; this phase is currently expected to begin April 2021.

DWR DCPD PENSTOCK INSPECTION

SAN BERNARDINO, CA



The Devil Canyon Power Plant is a State Water Project facility. The penstocks and power plant are located in the San Bernardino Mountains near the mouth of Devil Canyon. From the San Bernardino Tunnel, two 6,800-foot long steel penstocks serve the Devil Canyon Power Plant. Penstock #1 was constructed in 1972 and has a flow capacity of about 1,200 cfs while penstock #2, built in 1992, has a capacity of about 1,600 cfs.

Alta Vista was contracted by the California Department of Water Resources (DWR) under an O&M Civil Maintenance and Engineering Branch Contract with Stantec Consulting Services Inc. (Stantec) to allow for independent third-party quality assurance inspection of high angle rope access areas during contractor repairs and recoating of the Devil Canyon Power Plant penstock #1.

Alta Vista was tasked with conducting independent quality assurance inspection alongside DWR staff during the blasting and recoating work. From the limited NDT (ultrasonic testing) inspection at the joints, Alta Vista found no loss in base material. This was an initial assessment of the middle ring thickness at only two joint locations (taken from the exterior surface) prior to blasting to remove corrosion products. Additional pit depth measurements taken after blasting revealed wastage of the middle rings at exposed areas between the pipe joint ends. Wastage was in the form of pits that represented loss of material up to 30%. With the exception of the middle rings, all pipe wall areas inspected showed



no significant pitting. Alta Vista also found all blasting and coating operation eventually to be in compliance with the contract requirements from their periodic inspection.

Alta Vista also reviewed Contractor's final QC records to ensure compliance with the work plan and verified accurate documentation of environment parameters.

DWR RMIP DEVELOPMENT

SACRAMENTO, CA



In support of the California Department of Water Resources, Alta Vista developed the Rotary Machine Inspection Program (RMIP) Manual for the Francis Turbine Runner. RMIP manual is intended to be used as a reference guide for new employees to get familiar with individual main components of Francis turbine and their critical aspects. RMIP manual provides a reference guide for inspectors performing in-place assembled unit inspections based on a trigger, a regular scheduled inspection, or as part of a larger project (such as before the disassembly of the unit for repair). This would ensure that components and assemblies are fully inspected in their assembled as-found condition.

Turbine runners are subject to water pressure, corrosion, cavitation, erosion, cyclic stresses, strain, and fatigue. These conditions could result in wear, cracking, and other damage. Additionally, if the original material were severely deteriorated or damaged, the turbine runner could then be mechanically and hydraulically unbalanced. This could lead to higher cyclic loading on other portions of the unit, including damage to the water passage and (guide and thrust) bearings.

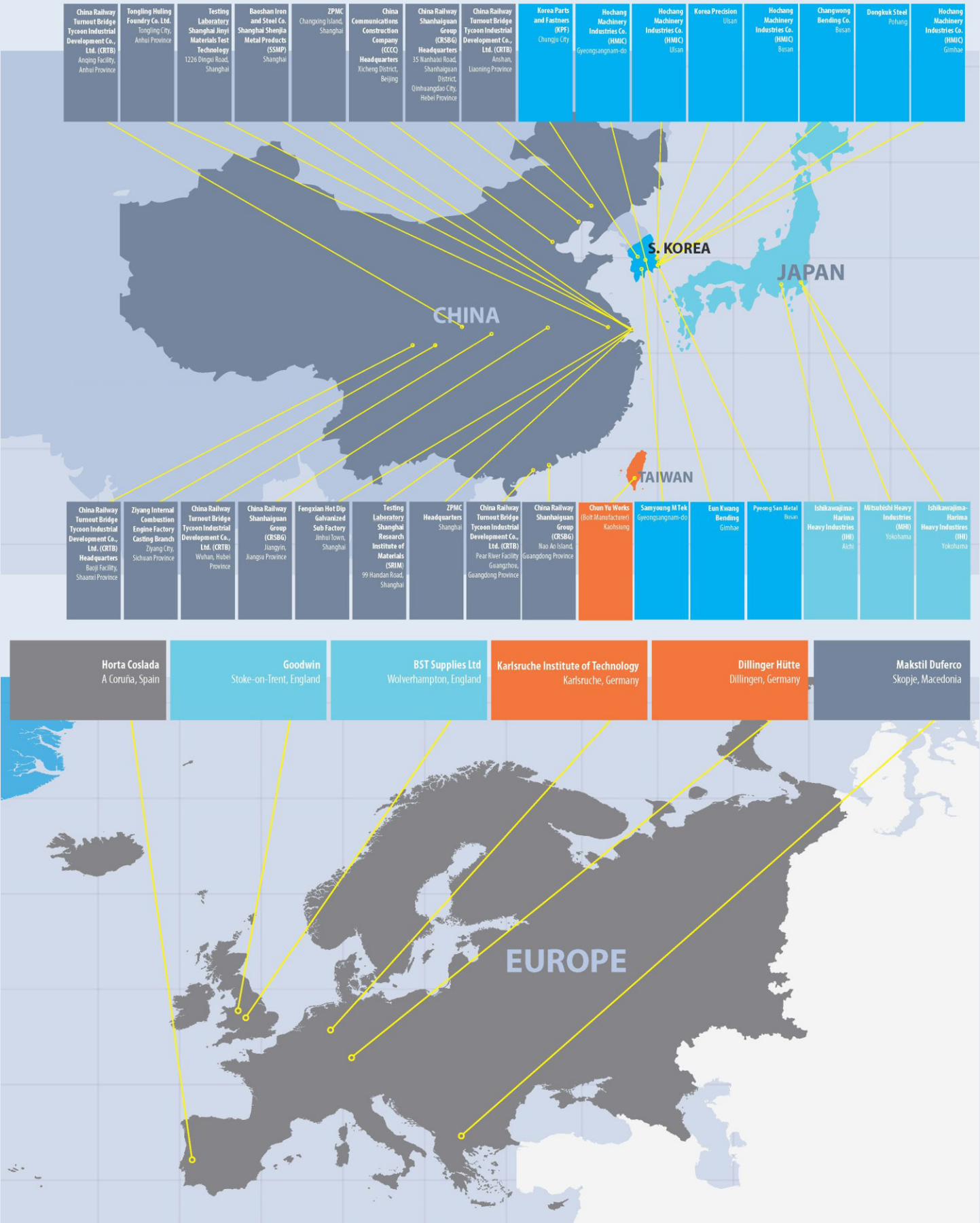
RMIP procedures intend to review the areas of concern on a Runner in a systematic fashion to document the present condition, areas of concern (as related to the trigger for the inspection), or any changes observed since the previous inspection (such that the inspector can identify areas for additional investigation during further inspection before disassembly). DWR has both stainless steel and carbon steel runners in service.



RMIP will help ensure that inspection findings are documented and reported properly with recommendations provided based on the inspection findings; appropriate habits can then be developed and implemented during inspections to minimize any risk of failure.

INTERNATIONAL FABRICATION

QUALITY ASSURANCE EXPERIENCE



METROPOLITAN SEWER: GENERAL MASTER SERVICE AGREEMENT

CINCINNATI, OH

CINCINNATI WATER WORKS: GEOTECHNICAL ENGINEERING SERVICES

CINCINNATI, OH

NORTHERN KENTUCKY WATER DISTRICT - SUBDISTRICT G: GEOTECHNICAL ENGINEERING SERVICES

CINCINNATI, OH

CITY OF MIAMISBURG: WASTEWATER COLLECTION SYSTEM UPGRADES

MIAMISBURG, OH

BEAVERCREEK WASTEWATER TREATMENT PLANT EXPANSION

ATLANTA, GA

METROPOLITAN SEWER DISTRICT: SSO 700 FACILITY

CINCINNATI, OH

METROPOLITAN SEWER DISTRICT: PRELIMINARY-PRIMARY TREATMENT IMPROVEMENTS, MILLCREEK WWTP

CINCINNATI, OH

METROPOLITAN SEWER DISTRICT: SEPTAGE RECEIVING STATION, GEST & EVANS STREETS

CINCINNATI, OH

LADWP HAYNES GENERATING STATION

LOS ANGELES, CA

LADOT-LADWP LAY DOWN AREA

LOS ANGELES, CA

NAVAL AIR STATION NORTH ISLAND REMEDIAL INVESTIGATION (SWMU 80)

SAN DIEGO, CA

OLIVENHAIN WATER DISTRICT WATER LINE REPLACEMENT

ENCINITAS, CA

MOUNTAIN VIEW DRIVE, CEMETERY WATERLINE REPLACEMENT PROJECT

ESCONDIDO, CA

CITY OF SAN DIEGO: PACIFIC BEACH WATER PIPELINE PROJECT

SAN DIEGO, CA

CITY OF SAN DIEGO: 30TH STREET PIPELINE PROJECT

SAN DIEGO, CA

CITY OF SAN DIEGO: HARBOR DRIVE TRUNK SEWER

SAN DIEGO, CA

NEW PUMP STATIONS AND SEWER PROJECT

OLDHAM COUNTY, KY

OHIO RIVER WASTE WATER TREATMENT PLANT

GOSHEN, KY

8TH AND HOPKINS NEW STORM SEWER

JEFFERSONVILLE, IN

GOTTBRATH BORE AND JACK PIT

JEFFERSONVILLE, IN

FALCONCREST SEWER

JEFFERSONVILLE, IN

SPROUT SEWER EXTENSION

JEFFERSONVILLE, IN

RRDA CHARLESTOWN WATER MAIN

CHARLESTOWN, IN

INTERNATIONAL DRIVE

JEFFERSONVILLE, IN

LOS VAQUEROS RESERVOIR EXPANSION PROJECT

CONTRA COSTA COUNTY, CA

ZONE 7 WATER DISTRICT: ON-CALL SERVICES

ALEMEDA COUNTY, CA

UPPER SAND CREEK BASIN RESTORATION

CONTRA COSTA COUNTY, CA

FREEMONT REGIONAL WATER INTAKE FACILITY

SACRAMENTO, CA

BENNINGTON RESIDENTIAL WATER SUPPLY: PFAS SAMPLING

BENNINGTON, VT

BULLITT COUNTY PIPELINE

BULLITT COUNTY, KY

SANTA FE IRRIGATION DISTRICT: GROUP 3 PRESSURE REDUCING STATION REPLACEMENT

SOLANA BEACH AND RANCHO SANTA FE, CA

VALLECITOS WATER DISTRICT: SAN ELIJO HILLS PUMP STATION

SAN MARCOS, CA

SWEETWATER AUTHORITY: RICHARD A. REYNOLDS DESALINATION FACILITY PHASE II EXPANSION

CHULA VISTA, CA

GREAT HIGHWAY SOUTH OCEAN BEACH COASTAL EROSION AND WASTEWATER INFRASTRUCTURE PROTECTION

SAN FRANCISCO, CA



CERTIFICATIONS

Atla Vista prides itself on the quality of its staff which is comprised of trained and talented professionals and many with advanced degrees. Our personnel are certified in their individual specialty areas and participate in ongoing training programs to enhance their personal expertise.

Our specialists include registered civil and geotechnical engineers and geologists, environmentalists, scientists, multi-disciplined materials testing and inspection technicians and inspectors, and project managers. A capable and competent administrative staff supports these technical specialists. Atla Vista is accredited, approved, or affiliated with the following agencies:

- International Code Council (ICC)
- International Accreditation Service (IAS) ISO 17025
- American Association of State Highway and Transportation Officials (AASHTO)
- AASHTO Accreditation Program (AAP)
- American Society of Civil Engineers (ASCE)
- National Society of Professional Engineers (NSPE)
- American Institute of Architects (AIA)
- Idaho Association of Professional Geologists (IAPG)
- National Institute for Certifying in Engineering Technologies (NICET)
- AIHA's Proficiency Analytical Testing (PAT for bulk and air asbestos)
- Society of American Military Engineers (SAME)
- U.S. Army Corps of Engineers (USACE)
- Registered Environmental Assessors, CA (REA)
- American Society of Nondestructive Testing (ASNT)
- American Welding Society (AWS)
- American Concrete Institute (ACI)
- Cement and Concrete Reference Laboratory (CCRL)
- State DOT / Transportation Organizations Nationwide
- National Association of Corrosion Engineers



Alta Vista

— AN ATLAS COMPANY —

555 12TH STREET | SUITE 910 OAKLAND | CA 94607

www.altavistasolutions.com